

# Top-Mount Air Conditioners

2000-9000 BTU/Hr. (586-2637 Watts)



**MHB11**



**HB16**

## Features

- Stock MHB11 models are equipped with a thermostat control that offers convenient digital display of enclosure temperature and high temperature alarm (125°F/52°C). Flashing display indicates alarm condition.
- Genesis™ units are directly interchangeable with the comparable Slimboy Series.
- MHB11 models have an active condensate management system that evaporates moisture from enclosure and eliminates drain tubes, buckets and wet floors in typical applications.
- Top-Mount air conditioners are ideal for use where there is little or no clearance around the enclosure.
- High CFM ball-bearing centrifugal blowers are ideal for densely packaged enclosures.
- 100% functionally tested.
- Mounting gaskets, drawings and instruction manual furnished.
- All units use a CFC-free or environmentally safe refrigerant.




**TYPE 12 RoHS**

UL/CUL recognized and CE standard on all stock Genesis™ MHB11 models. Certain HB16 models available with UL listing. (UL File SA6453) Please contact the factory. UL TYPE 12 approval on all models.

## Option Packages (see pg. B.47)

	MHB11	HB16
Thermostat Package	✓	✓
Thermostat/Malfunction Package	✓	✓
Special Voltage Package	✓	✓
Corrosive Environment Package*	✓	✓
Stainless Steel Package*	✓	✓
Heater Package	✓	✓

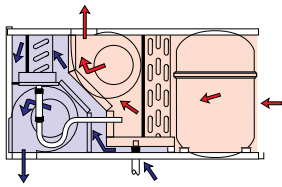
\* Please refer to pages B.21-B.24 for our air conditioners that have been engineered and manufactured specifically for demanding applications.

## McLean Thermal Closed-loop Cooling

Within the air conditioner, the recirculated clean enclosure air is kept separate from the ambient airflow system. This protects the electronic controls and prevents shutdowns caused by heat, humidity, dust and other contaminants.

## GENESIS™ MHB11 Series

2000-4000 BTU/Hr. (586-1172 Watts)  
H x W x D: 10.25" (260) x 17" (432) x 21.08" (535)



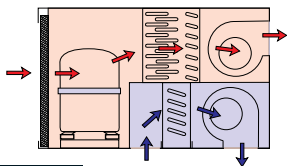
**MHB11**

Model	Voltage	Full Load Hz	Amps	Phase	BTU/Hr @ Max Amb Temp	Max Amb Temp °F/°C	Shipping Weight Lbs/Kgs
MHB11-0216-G306	STOCK 115	50/60	9.7/9.0	1	2200/2200	125/52	90/41
MHB11-0216-G3XX	115	50/60	9.7/9.0	1	2200/2200	125/52	90/41
MHB11-0226-G306	STOCK 230	50/60	5.5/4.6	1	2200/2200	125/52	90/41
MHB11-0226-G3XX	230	50/60	5.5/4.6	1	2200/2200	125/52	90/41
MHB11-0246-G400	400/460	50/60	3.0/2.5	1	2200/2200	125/52	110/50
MHB11-0246-G3XX	400/460	50/60	3.0/2.5	1	2200/2200	125/52	110/50
MHB11-0416-G307	STOCK 110/115	50/60	14.7/13.6	1	3300/4000	125/52	108/49
MHB11-0416-G3XX	110/115	50/60	14.7/13.6	1	3300/4000	125/52	108/49
MHB11-0426-G306	STOCK 220/230	50/60	8.0/7.5	1	3300/4000	125/52	108/49
MHB11-0426-G3XX	220/230	50/60	8.0/7.5	1	3300/4000	125/52	108/49
MHB11-0446-G400	440/460	50/60	4.4/2.1	1	3300/4000	125/52	128/58
MHB11-0446-G3XX	440/460	50/60	4.4/2.1	1	3300/4000	125/52	128/58

-XX will be replaced with a two-digit number designating all desired options. Consult the factory for specific model numbers.

## HB16 Series

6000-9000 BTU/Hr. (1758-2637 Watts)  
H x W x D: 15.72" (399) x 19" (483) x 25.19" (640)



**HB16**

- Ambient air flow
- Clean air flow

Model	Voltage	Full Load Hz	Amps	Phase	BTU/Hr @ Max Amb Temp	Max Amb Temp °F/°C	Shipping Weight Lbs/Kgs
HB16-0615-0XX	115	50/60	13.0	1	5000/6000	125/52	145/66
HB16-0616-0XX	115	60	13.0	1	6000	125/52	140/64
HB16-0625-0XX	230	50	6.5	1	6000	125/52	140/64
HB16-0626-0XX	230	60	6.5	1	6000	125/52	140/64
HB16-0646-G400	460	50/60	3.6	1	5000/6000	125/52	165/75
HB16-0646-G0XX	460	50/60	3.6	1	5000/6000	125/52	165/75
HB16-0825-0XX	230	50	8.0	1	8000	125/52	145/66
HB16-0846-G400	460	50/60	4.4	1	7400/8000	125/52	185/84
HB16-0846-G0XX *	460	50/60	4.4	1	7400/8000	125/52	185/84
HB16-0915-0XX	115	50/60	17.0/19.0	1	8500/9000	125/52	150/68
HB16-0916-0XX	115	60	19.0	1	9000	125/52	145/66
HB16-0926-0XX	230	60	9.5	1	9000	125/52	145/66

-XX will be replaced with a two-digit number designating all desired options. Consult the factory for specific model numbers.

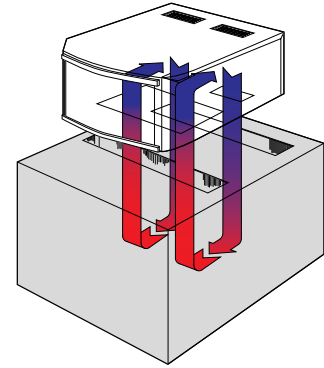
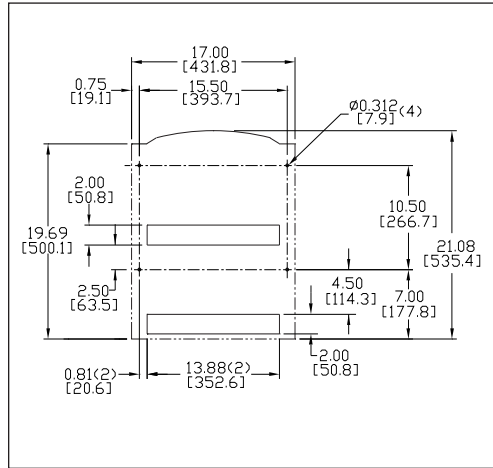
Most models available with Hz selector, if desired. Contact factory.

The 50/60 Hz units, because of the addition of an autotransformer, cost more than straight 60 Hz models. Units wired for 50 Hz operation when shipped. A single internal wiring change is required for 60 Hz operation.

\* Transformer mounted outside in a separate box attached to the unit.

## Genesis™ MHB11 Series CUT-OUT NOTES

1. Dash lines represent air conditioner.
2. Cut-out dimensions for standard product only.
3. Full-size mounting template provided.

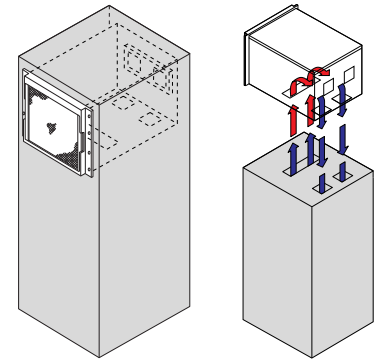
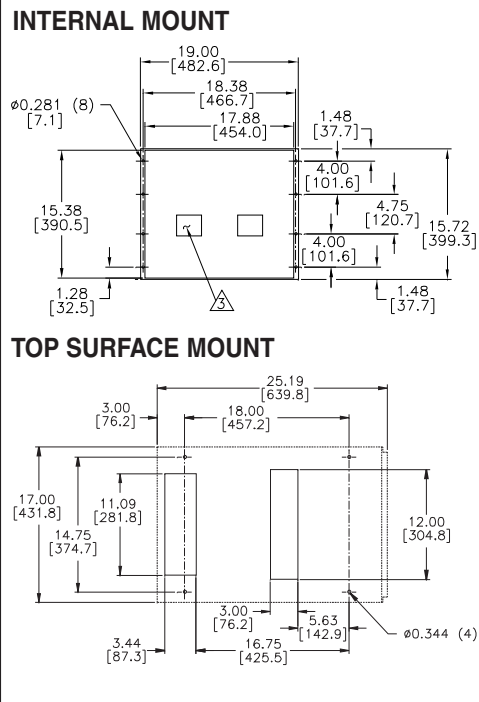


### TOP SURFACE MOUNT TO ENCLOSURE

For TYPE 12 enclosure, interfacing air-out and air-in openings are required in the enclosure top.

## HB16 Series CUT-OUT NOTES

1. Dash lines represent air conditioner.
2. Entire weight of air conditioner is not intended to be supported by the mounting flanges. Slide rails should be installed.
3. Cut-out and duct or gasket required on enclosure for condenser air discharge.
4. Cut-out dimensions for standard product only.



### INTERNAL MOUNT TO ENCLOSURE

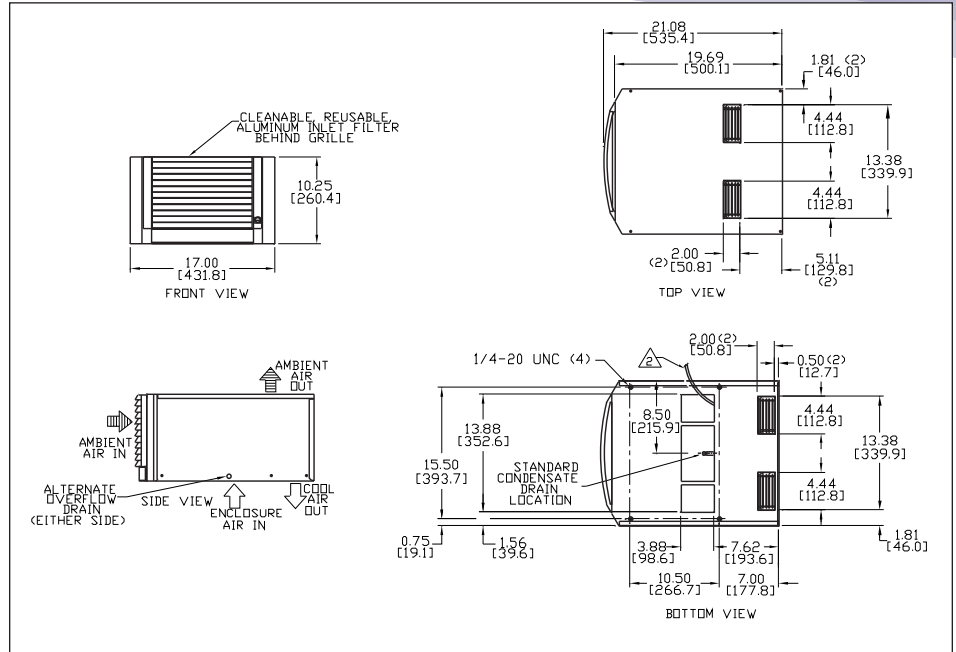
For internal top mounting to TYPE 12 enclosures, slide rails should be used. Cool air blown down. Special filter frame required, consult factory about model specifications.

### TOP SURFACE MOUNT TO ENCLOSURE

For top mounting of air conditioner, interfacing air-out and air-in openings are required in the top of the enclosure.

## DESIGN NOTES

1. Gasket kit for mounting to enclosure included.
2. Service cord.
3. Condensate from enclosure drains to bottom pan of unit where it is evaporated by condenser heat.
4. Condensate overflow drain hose included.



## DESIGN NOTES

1. Gasket kit for mounting to enclosure included.
2. Service cord terminated with appropriate plug cap.
3. Condensate drain hose with a "P" trap included.

